

# SMART SOCKETS™



## LIGHTER **FASTER** STRONGER

RAD Smart Sockets™ use RAD Torque's transducer technology combined with a custom interface to measure the actual torque applied to the bolt during a torque cycle. Its compact size and innovative technology make the Smart Socket™ a perfect audit tool for inspecting bolted joints and it can function as a calibration device for various torque tools. Patented product.

### FEATURES

- Measures and displays peak torque
- Full data collection - export to email by PDF, XLS, CSV
- View in real time via Bluetooth onto your smartphone or tablet



Non Impacting



Safe & Reliable



Accredited  
ISO/IEC 17025

### CASE

**Durable, light weight, shock proof.**  
**Designed to protect your RAD investment.**



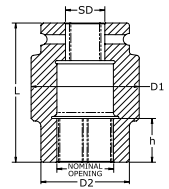
Bluetooth connectivity to your smart phone or tablet



## NEW WORLD TECHNOLOGIES INC

#100 - 30722 MARSHALL RD | ABBOTSFORD, BC V2T 0H9 | CANADA  
604.852.0405 | INFO@RADTORQUE.COM | RADTORQUE.COM

# DIMENSIONS



## SMART SOCKET™ WITH .75" SD

PART #	NOMINAL OPENING in (mm)	OUTPUT	WEIGHT LB (Kg)	MAX TORQUE FT.LB (NM)	DIMENSION D1 in (mm)	DIMENSION D2 in (mm)	DIMENSION L in (mm)	t in (mm)	
26936		29	6pt	3.0 (1.36)	1500 (2000)	2.83 (72)	1.93 (49)	3.54 (90)	0.95 (24)
26931	1-3/16"	30	6pt	3.0 (1.36)	1500 (2000)	2.83 (72)	1.93 (49)	3.54 (90)	0.95 (24)
22002		33	6pt	3.4 (1.56)	1500 (2000)	2.83 (72)	2.13 (54)	3.94 (100)	0.75 (19)
26932		36	6pt	3.1 (1.39)	1500 (2000)	2.83 (72)	2.13 (54)	3.54 (90)	0.95 (24)
28448	1-7/16		6pt	3.1 (1.39)	1500 (2000)	2.83 (72)	2.15 (55)	3.54 (90)	0.95 (24)
28452	1-5/8"	41	6pt	3.1 (1.40)	1500 (2000)	2.83 (72)	2.35 (60)	3.54 (90)	1.0 (25)
28456	1-5/8"	41	8pt	4.1 (1.85)	1500 (2000)	2.83 (72)	3.07 (78)	3.54 (90)	0.95 (24)
22645	1-13/16"	46	6pt	3.0 (1.35)	1500 (2000)	2.83 (72)		3.42 (87)	0.98 (25)
30471	2.0"	51	6pt	3.5 (1.60)	1500 (2000)	2.83 (72)		3.54 (90)	1.18 (30)

## SMART SOCKET™ WITH 1.0" SD

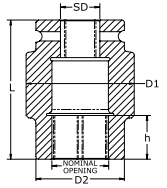
PART #	NOMINAL OPENING in (mm)	OUTPUT	WEIGHT LB (Kg)	MAX TORQUE FT.LB (NM)	DIMENSION D1 in (mm)	DIMENSION D2 in (mm)	DIMENSION L in (mm)	t in (mm)	
24128	1.0"		6pt	3.1 (1.40)	1500 (2000)	2.83 (72)	1.69 (43)	3.94 (100)	0.75 (19)
26282	1-3/16"	30	6pt	3.2 (1.44)	1500 (2000)	2.83 (72)	2.33 (59)	3.42 (87)	0.98 (25)
33917	1-3/16"	30	6pt	3.2 (1.43)	1500 (2000)	2.83 (72)	2.13 (54)	3.54 (90)	0.80 (20)
26283	1-1/4"		6pt	3.1 (1.40)	1500 (2000)	2.83 (72)	2.33 (59)	3.42 (87)	0.98 (25)
28788		32	6pt	3.4 (1.54)	1500 (2000)	2.83 (72)	2.13 (54)	3.94 (100)	0.80 (20)
20879		33	6pt	3.2 (1.47)	1500 (2000)	2.83 (72)	2.13 (54)	3.94 (100)	0.75 (19)
21363		36	6pt	3.1 (1.41)	1500 (2000)	2.83 (72)		3.42 (87)	0.98 (25)
21917		36	6pt	3.2 (1.46)	1500 (2000)	2.83 (72)	2.13 (54)	3.94 (100)	0.87 (22)
23512		36	6pt	4.5 (2.03)	1500 (2000)	2.83 (72)	2.13 (54)	5.19 (132)	0.87 (22)
25448	1-1/2"	38	6pt	3.0 (1.38)	1500 (2000)	2.83 (72)		3.42 (87)	0.98 (25)
22158	1-5/8"	41	6pt	3.0 (1.34)	1500 (2000)	2.83 (72)		3.42 (87)	0.98 (25)
24681	1-5/8"	41	6pt	4.5 (2.03)	1500 (2000)	2.83 (72)	2.48 (63)	5.07 (129)	0.87 (22)
22234		42	6pt	2.9 (1.33)	1500 (2000)	2.83 (72)		3.42 (87)	0.98 (25)
22157	1-3/4"		6pt	2.9 (1.29)	1500 (2000)	2.83 (72)		3.42 (87)	0.98 (25)
28833	1-3/4"		6pt	3.7 (1.69)	1500 (2000)	2.83 (72)	2.60 (66)	3.80 (71)	0.98 (25)
20880	1-13/16"	46	6pt	2.8 (1.29)	1500 (2000)	2.83 (72)		3.42 (87)	0.98 (25)
25491	1-13/16"	46	6pt	4.2 (1.90)	3400 (4600)	3.39 (86)		3.52 (89)	1.18 (30)
23847	1-13/16"	46	6pt	3.2 (1.47)	1500 (2000)	2.83 (72)		3.94 (100)	0.98 (25)
22110	1-7/8"		6pt	4.1 (1.87)	3400 (4600)	3.39 (86)		3.52 (89)	1.18 (30)
20881		50	6pt	3.8 (1.73)	3400 (4600)	3.39 (86)		3.52 (89)	1.18 (30)
24124	2.0"	51	6pt	3.8 (1.72)	3400 (4600)	3.39 (86)		3.52 (89)	1.18 (30)
29997	2-1/16"		6pt	4.0 (1.80)	3400 (4600)	3.39 (86)		3.60 (91)	1.18 (30)
20882		55	6pt	3.6 (1.62)	3400 (4600)	3.39 (86)		3.52 (89)	1.18 (30)
23964		55	6pt	4.7 (2.14)	3400 (4600)	3.39 (86)		4.13 (105)	1.30 (33)
24971	2-3/16"		6pt	3.6 (1.64)	3400 (4600)	3.39 (86)		3.52 (89)	1.18 (30)
30211	2-1/4"	57	6pt	3.8 (1.73)	3400 (4600)	3.39 (86)		3.64 (92)	1.30 (33)
33251	2-1/4"	57	6pt	4.8 (2.19)	3400 (4600)	3.39 (86)		4.13 (105)	1.30 (33)
20883		60	6pt	3.3 (1.50)	3400 (4600)	3.39 (86)		3.52 (89)	1.18 (30)
26111	2-3/8"		6pt	3.4 (1.53)	3400 (4600)	3.39 (86)		3.52 (89)	1.18 (30)
32637	2-15/16"	75	6pt	10.3 (4.69)	3400 (4600)	4.53 (115)		4.75 (121)	1.73 (44)



## NEW WORLD TECHNOLOGIES INC

#100 - 30722 MARSHALL RD | ABBOTSFORD, BC V2T 0H9 | CANADA  
604.852.0405 | INFO@RADTORQUE.COM | RADTORQUE.COM

# DIMENSIONS



## SMART SOCKET™ WITH 1.5" SD

PART #	NOMINAL OPENING in (mm)		OUTPUT	WEIGHT LB (Kg)	MAX TORQUE FT.LB (NM)	DIMENSION D1 in (mm)	DIMENSION D2 in (mm)	DIMENSION L in (mm)	t in (mm)
30081	2.0"	51	6pt	8.8 (3.97)	8000 (10800)	4.13 (105)		4.13 (105)	1.18 (30)
25917	2.0"		4pt	9.4 (4.28)	8000 (10800)	4.13 (105)		4.75 (121)	1.83 (46)
32464	2-1/16"		6pt	8.6 (3.90)	8000 (10800)	4.13 (105)		4.13 (105)	1.18 (30)
26100		55	6pt	8.2 (3.71)	8000 (10800)	4.13 (105)		4.13 (105)	1.18 (30)
25684		55	6pt	9.4 (4.28)	3400 (4600)	4.13 (105)	3.39 (86)	5.33 (135)	1.75 (44)
26048		60	6pt	7.7 (3.50)	8000 (10800)	4.13 (105)		4.13 (105)	1.18 (30)
32987		60	6pt	9.4 (4.25)	8000 (10800)	4.13 (105)	3.43 (87)	5.51 (140)	1.38 (35)
23690	2-9/16"	65	6pt	11.1 (5.01)	8000 (10800)	4.53 (115)		4.75 (121)	1.73 (44)
27924	2-9/16"	65	6pt	9.6 (4.35)	8000 (10800)	4.13 (105)	3.46 (88)	5.91 (150)	2.0 (51)
30212	2-5/8"	67	6pt	8.1 (3.68)	8000 (10800)	4.13 (105)		4.50 (114)	1.48 (38)
28722	2-3/4"	70	6pt	8.4 (3.79)	8000 (10800)	4.13 (105)		4.75 (121)	1.73 (44)
21911	2-15/16"	75	6pt	9.7 (4.42)	8000 (10800)	4.53 (115)		4.75 (121)	1.73 (44)
21915	3.0"	76	6pt	9.8 (4.46)	8000 (10800)	4.53 (115)		4.75 (121)	1.73 (44)
27862	3-1/16"		6pt	11.9 (5.38)	8000 (10800)	4.53 (115)		5.46 (139)	1.85 (47)
28420	3-1/8"		6pt	11.2 (5.08)	8000 (10800)	4.53 (115)		5.45 (138)	1.80 (46)
29929	3-1/8"		6pt	13.3 (6.01)	8000 (10800)	4.53 (115)		6.15 (156)	1.80 (46)
20885		80	6pt	9.4 (4.25)	8000 (10800)	4.53 (115)		4.75 (121)	1.73 (44)
27259		80	6pt	15.6 (7.07)	8000 (10800)	4.53 (115)		6.70 (170)	1.80 (46)
30058		80	6pt	15.8 (7.17)	8000 (10800)	4.53 (115)		7.09 (180)	2.0 (51)
26795		85	6pt	9.9 (4.49)	8000 (10800)	4.53 (115)	4.76 (121)	4.87 (124)	1.85 (47)
33626	3-1/2"		4pt	20.3 (9.19)	12000 (16200)	6.18 (157)		5.50 (140)	2.45 (62)
25657		90	6pt	12.7 (5.77)	12000 (16200)	5.16 (131)		4.95 (126)	1.93 (49)
33320		90	6pt	18.2 (8.27)	12000 (16200)	5.16 (131)	4.96 (126)	6.70 (170)	1.93 (49)
27645	3-3/4"	95	6pt	13.4 (6.07)	12000 (16200)	5.16 (131)	5.30 (135)	5.21 (132)	2.13 (54)
27289	3-7/8"		6pt	16.9 (7.67)	12000 (16200)	5.16 (131)	5.75 (146)	5.45 (138)	2.13 (54)
25658	3-15/16"	100	6pt	15.4 (7.01)	12000 (16200)	5.16 (131)	5.75 (146)	5.21 (132)	2.13 (54)
32405	4-1/8"	105	6pt	16.1 (7.30)	12000 (16200)	5.16 (131)	5.95 (151)	5.20 (132)	2.13 (54)
31339	4-1/4"	110	6pt	17.6 (8.00)	12000 (16200)	5.16 (131)	6.18 (157)	5.50 (140)	2.45 (62)
27290	4-5/8"		6pt	17.4 (7.90)	12000 (16200)	5.16 (131)	6.40 (163)	5.45 (138)	2.32 (59)
32225			SD1.5	9.6 (4.37)	7000 (9500)	4.13 (105)		5.33 (135)	

## 6 POINT SMART SOCKET™ WITH 2.5" SD

PART #	NOMINAL OPENING in (mm)		OUTPUT	WEIGHT LB (Kg)	MAX TORQUE FT.LB (NM)	DIMENSION D1 in (mm)	DIMENSION D2 in (mm)	DIMENSION L in (mm)	t in (mm)
33773	3-7/8"		6pt	21.1 (9.57)	18000 (24400)	5.71 (145)		6.50 (165)	2.13 (54)



# NEW WORLD TECHNOLOGIES INC

#100 - 30722 MARSHALL RD | ABBOTSFORD, BC V2T 0H9 | CANADA  
604.852.0405 | INFO@RADTORQUE.COM | RADTORQUE.COM